

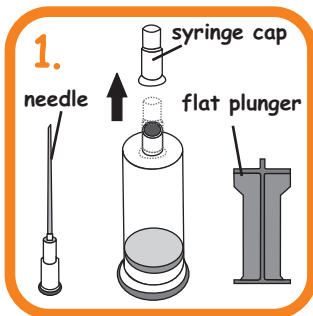
Refilling Instruction

saintink.com

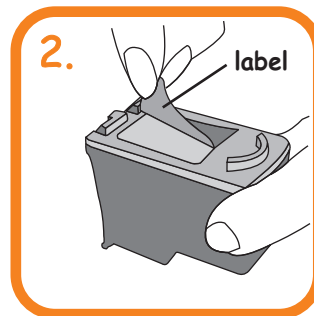
not just ink but saintink

for **Canon** cartridges

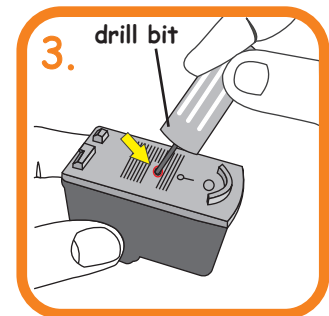
PG 40 / PG 50 / PG 830



Setup the "Injection Tube" by removing the syringe cap then attach the needle & plunger to the ink tube.



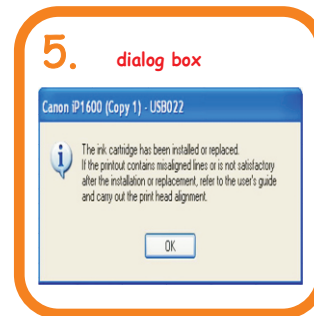
Remove the label on the cartridge.



Drill a hole on the cartridge lid as shown above. Ensure correct position of hole to be drilled.



Push the needle straight into the cartridge and pull out a little (2mm). Slowly press the plunger to inject about 10ml of ink into the cartridge. Ensure cartridge is in upright position. Stop filling if ink start to drip at print head.



Install the cartridge back into the printer. Do a nozzle check. Click OK when this dialog box is shown. If the result of the nozzle check is not good, execute deep cleaning and check print out. Repeat deep cleaning if necessary.



Reattach cap to needle, keep ink out of children reach and store ink in a cool and dry place.

ATTN : The printer will not detect the ink level of a **refilled cartridge**. In this case, it is important that the monitoring of the ink level be done visually and top up the ink where necessary.

To continue printing without ink will damage the print head.

