

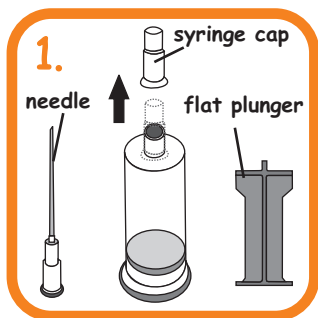
Refilling Instruction

saintink.com

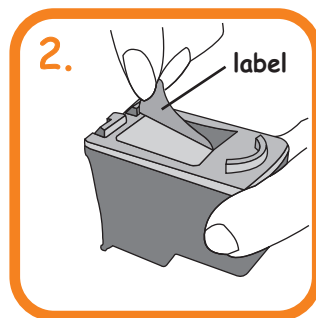
not just ink but saintink

for HP cartridges

HP22, HP28, HP57, HP75, HP93, HP95, HP97

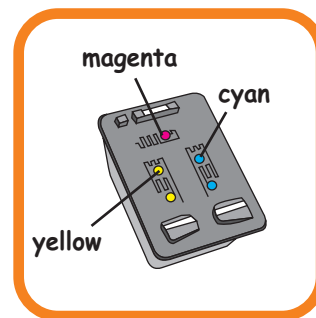


Setup the "Injection Tube" by removing the syringe cap then attach the needle & plunger to the ink tube.

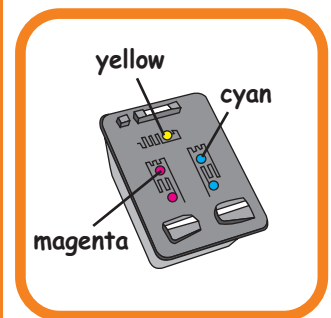


Remove the label on the cartridge.

3. CHECK YOUR CARTRIDGE MODEL & Follow Instruction for Color To Be Refill

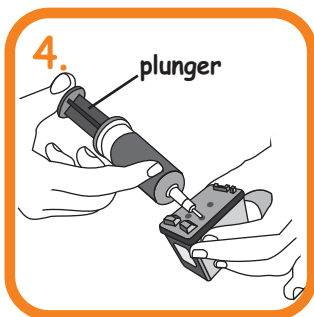


Refilling for HP22, HP28, HP57



Refilling for Hp75, HP93, HP95, HP97

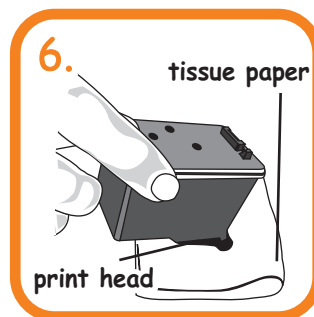
Study the position of the color and ensure the right color ink is injected into cartridge.



Push the needle straight into the cartridge and pull out a little (2mm). Slowly press the plunger to inject about 3ml per color of ink into the cartridge. Ensure cartridge is in upright position.



Dip the print head of the cartridge into water for 10 seconds.



Clean print head by stamping gently on tissue paper.

7. Install cartridge to printer and perform a nozzle check (run the head cleaning utility).

8. Reattach cap to needle, keep ink out of children reach and store ink in a cool and dry place.

ATTN : The printer will not detect the ink level of a **refilled cartridge**. In this case, it is important that the monitoring of the ink level be done visually and top up the ink where necessary.

To continue printing without ink will damage the print head.

