

Refilling Instruction

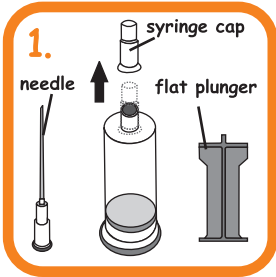
saintink.com

not just ink but saintink

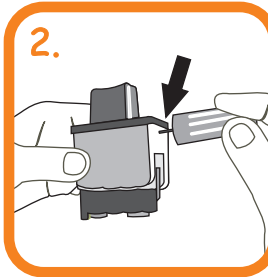
for Brother cartridges

LC 41/47/37/51/57

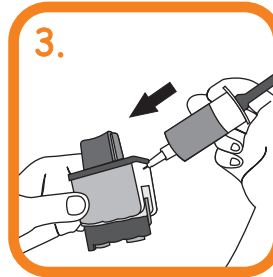
for LC 41/47



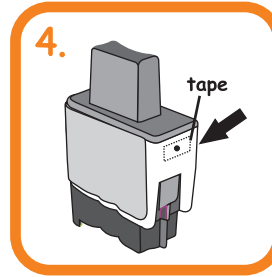
1. Setup the "Injection Tube" by removing the syringe cap then attach the needle & plunger to the ink tube.



2. Drill a hole on the back top side of the cartridge as shown in the picture above.



3. Insert needle slowly into cartridge and press the plunger to inject ink into cartridge as follow:
LC41/47B = 12-15ml of ink
LC41/47 Color = 7-9ml of ink

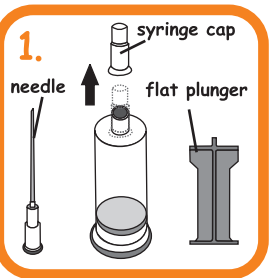


4. After refilling wipe/clean the hole with tissue paper. Seal the hole with a piece of transparent tape provided.



5. Install cartridge to printer and perform a nozzle check (run the head cleaning utility).
6. Reattach cap to needle, keep ink out of children reach and store ink in a cool and dry place.

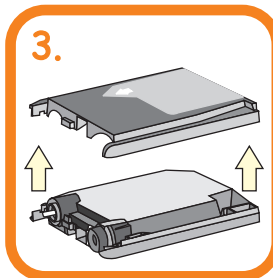
for LC 37/51/57



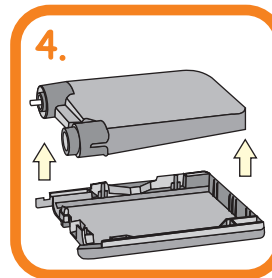
1. Setup the "Injection Tube" by removing the syringe cap then attach the needle & plunger to the ink tube.



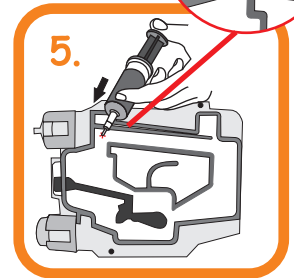
2. Cut the label with the cutter as shown in the picture.



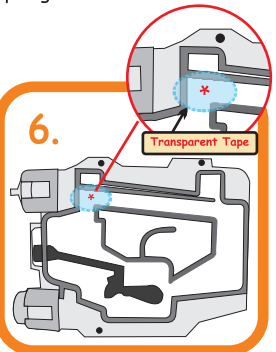
3. Open the cartridge casing as shown in the picture.



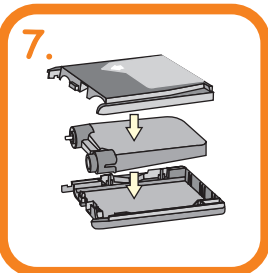
4. Take out the cartridge from the casing as shown in the picture.



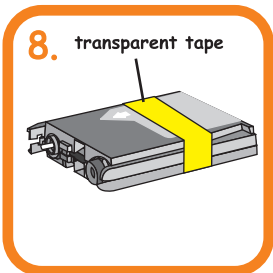
5. Pierce the Plastic Bag as shown in the Picture. Ensure in Upright Position, and slowly press the plunger to inject about 10ml of ink.



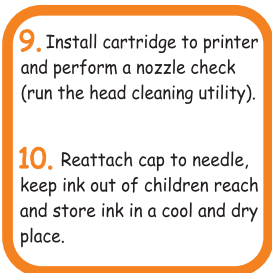
6. After refilling wipe/clean the hole with tissue paper. Seal the hole with a piece of transparent tape provided.



7. Recap the casing after placing back the cartridge.



8. Use a piece of "transparent tape" to hold the two sides of the casing together.



9. Install cartridge to printer and perform a nozzle check (run the head cleaning utility).
10. Reattach cap to needle, keep ink out of children reach and store ink in a cool and dry place.

