

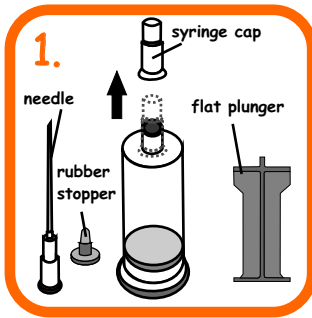
Refilling Instruction

saintink.com

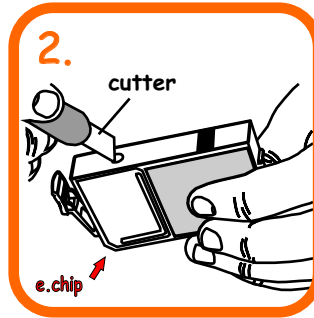
not just ink but saintink

for **Canon** cartridges

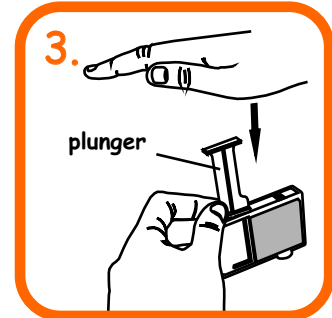
PGI 5B , CLI 8B , CLI 8C , CLI 8M , CLI 8Y



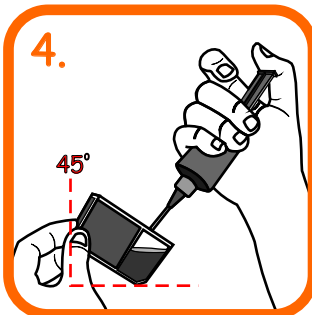
Setup the "Injection Tube" by removing the syringe cap then attach the needle & plunger to the ink tube.



Remove sticker with the cutter.



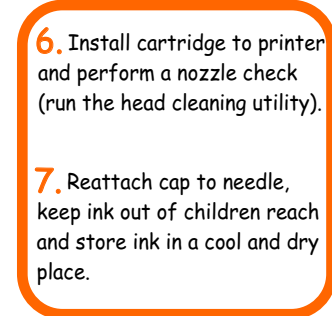
Place tip of plunger on "plastic ball" or "rubber stud" and hammer plunger to push the "plastic ball" or "rubber stud" into cartridge.



Hold the cartridge at 45° angle in the direction as shown in picture. Insert needle slowly into cartridge and press the plunger to inject ink as follow :
PGI 5B = 11-13ml of ink
PGI 8B & Color = 4-6ml of ink
Allow 30 seconds for ink to set.



After refilling is completed, clean the ink inlet hole with tissue paper and seal it with rubber stopper provided. Ensure ink is not dripping from nozzle. Ink will drip if rubber stopper is not inserted or seated firmly onto the hole.



6. Install cartridge to printer and perform a nozzle check (run the head cleaning utility).

7. Reattach cap to needle, keep ink out of children reach and store ink in a cool and dry place.

Caution

The OEM Canon cartridge has a electronic chip (e.chip picture #2 above) attached and it's purpose is to monitor the ink level remaining in the cartridge tank (avoid touching the chip). However, it will not detect the ink level of a refilled cartridge. In this case it is important that the monitoring of the ink level be done visually and top-up the ink where necessary.

To continue printing without ink will damage the print head.

The red light on the cartridge will continue to flick when a refilled cartridge is installed back onto the printer, it will not affect the function of the printer as long as ink is available in the cartridge. Follow the on screen instruction to continue printing.

