

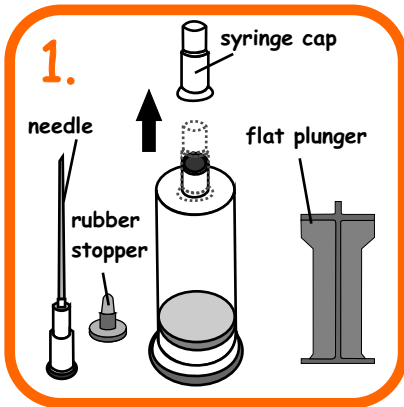
# Refilling Instruction

saintink.com

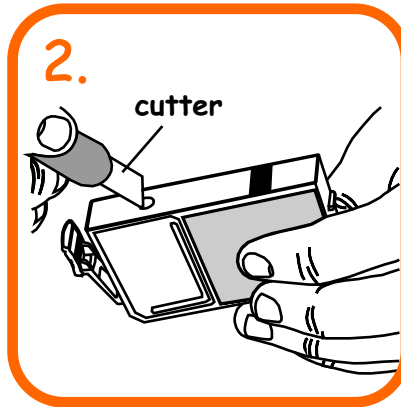
not just ink but saintink

for **Canon** cartridges

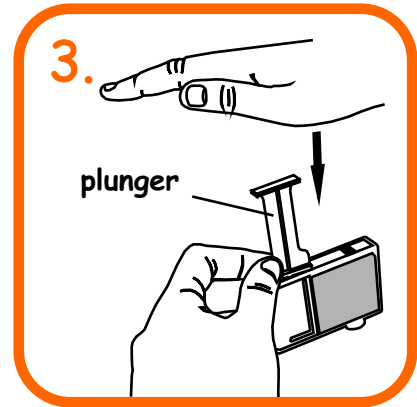
BCI 3B , BCI 3/6C , BCI 3/6M , BCI 3/6Y



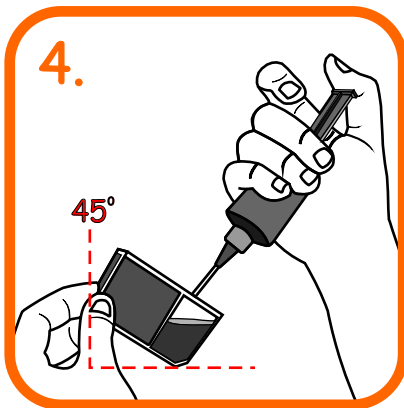
1. Setup the "Injection Tube" by removing the syringe cap then attach the needle & plunger to the ink tube.



2. Remove sticker with the cutter.



3. Place tip of plunger on "plastic ball" or "rubber stud" and hammer plunger to push the "plastic ball" or "rubber stud" into cartridge.



4. Hold the cartridge at 45° angle in the direction as shown in picture. Insert needle slowly into cartridge and press the plunger to inject ink into cartridge as follow:  
**BCI3B = 15ml of ink**  
**BCI3/6 Color = 8ml of ink**  
Allow 30 seconds for ink to set.



5. After refilling is completed, clean the ink inlet hole with tissue paper and seal it with rubber stopper provided. Ensure ink is not dripping from nozzle. Ink will drip if rubber stopper is not inserted or seated firmly onto the hole.

6. Install cartridge to printer and perform a nozzle check (run the head cleaning utility).

7. Reattach cap to needle, keep ink out of children reach and store ink in a cool and dry place.

