

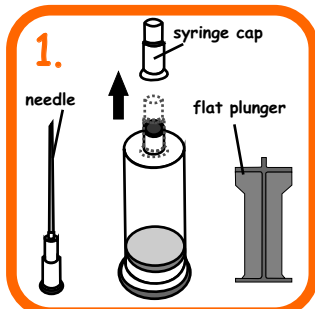
Refilling Instruction

saintink.com

not just ink but saintink

for HP cartridges

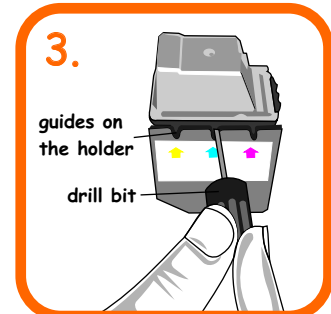
HP51625 , 51649 Color



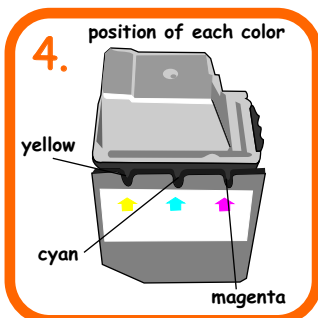
Setup the "Injection Tube" by removing the syringe cap then attach the needle & plunger to the ink tube.



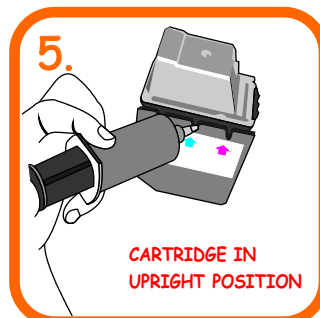
Install cartridge to color holder.



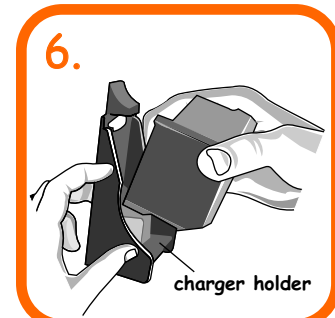
Drill 3 holes into cartridge for each color with drill bit provided. Use the guides on the holder. Wipe ink off at drill bit after each drill.



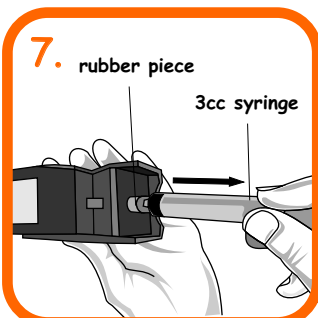
Study the position of each color. Only fill the color which is exhausted.



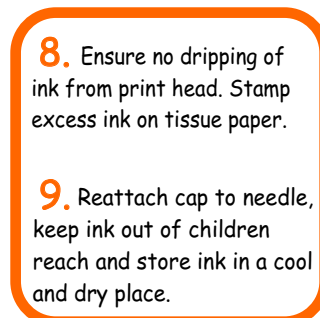
Push the needle into the cartridge and pull out a little (2mm). Remove the holder. Slowly press the plunger to inject 4ml of ink into the cartridge. Ensure cartridge is upright position. Stop filling if ink drips at print head.



Install cartridge to charger holder.



Insert the 3cc syringe to rubber piece at bottom of holder. Pull the plunger backwards to remove 0.5ml of ink from the cartridge. Remove cartridge from holder and seal holes with tape provided.



8. Ensure no dripping of ink from print head. Stamp excess ink on tissue paper.

9. Reattach cap to needle, keep ink out of children reach and store ink in a cool and dry place.

