

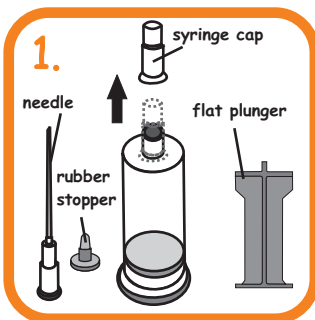
Refilling Instruction

saintink.com

not just ink but saintink

for HP cartridges

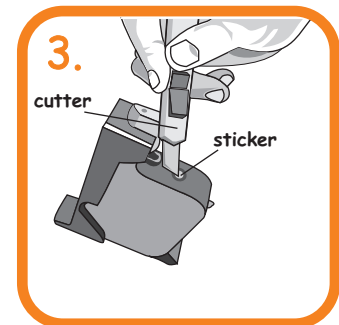
HP51640, 51644, 51645, C6615 Black



Setup the "Injection Tube" by removing the syringe cap then attach the needle & plunger to the ink tube.



Install cartridge to holder.



Remove sticker with the cutter.



Place tip of plunger on metal ball and hammer plunger to push ball into cartridge.



Insert needle slowly into cartridge and inject 40ml of ink. Avoid puncturing the ink bag.



Seal hole with rubber stopper provided.



Insert the 3cc syringe to rubber piece at bottom of holder. Pull the plunger backwards to remove 2ml of ink from the cartridge.

