

# Refilling Instruction

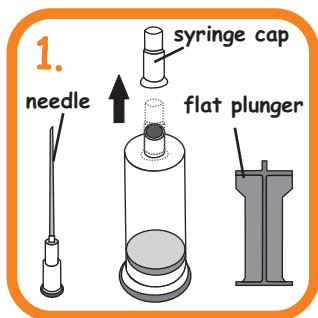
saintink.com

not just ink but saintink

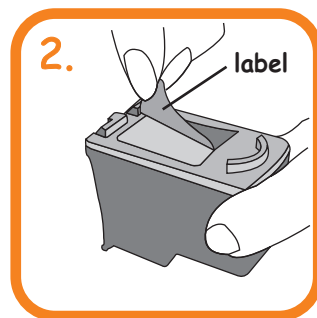
for HP cartridges

HP 22 / 28 / 57 / 60 / 75 / 93 / 95 / 97

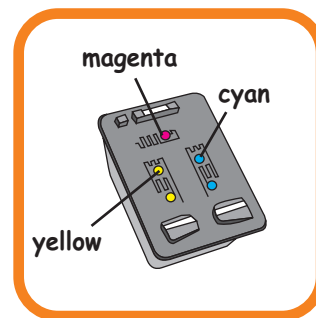
### 3. CHECK YOUR CARTRIDGE MODEL & Follow Instruction for Color To Be Refill



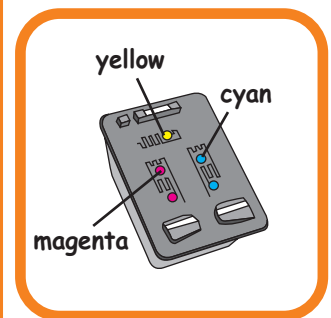
Setup the "Injection Tube" by removing the syringe cap then attach the needle & plunger to the ink tube.



Remove the label on the cartridge.

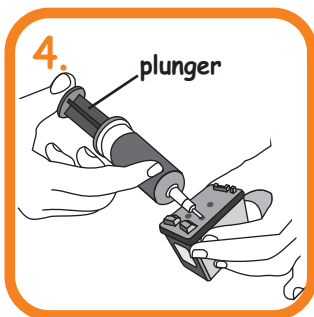


Refilling for HP 22 / 28 / 57



Refilling for HP60 / 75 / 93 / 95 / 97

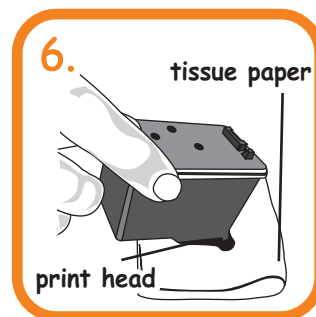
Study the position of the color and ensure the right color ink is injected into cartridge.



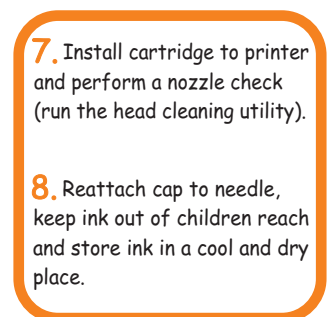
Push the needle straight into the cartridge and pull out a little (2mm). Slowly press the plunger to inject about 3ml per color of ink into the cartridge. Ensure cartridge is in upright position.



Dip the print head of the cartridge into water for 10 seconds.



Clean print head by stamping gently on tissue paper.



8. Reattach cap to needle, keep ink out of children reach and store ink in a cool and dry place.

**ATTN :** The printer will not detect the ink level of a **refilled cartridge**. In this case, it is important that the monitoring of the ink level be done visually and top up the ink where necessary.

**To continue printing without ink will damage the print head.**

