



User's Guide

CL 41

Maintenance Instruction

Avoid printing without ink by performing a "top up" approach. This is meant by refilling small amount of ink into the cartridge from time to time instead of waiting till the ink is exhausted from the cartridge.

Avoid exposing the cartridge to air for too long (more than 5 hours) as ink will dry up at print head and clog it.

Avoid over refilling and to ensure no dripping before installing the cartridge back into the printer.

TROUBLE SHOOTING TIPS

<u>Problem</u>	<u>Possible Cause</u>	<u>Remedy</u>
1. Ink dripping from print head.	Overfilling.	Stamp print head on tissue until ink stop dripping.
2. Print quality not good.	Clogged or damaged print head.	Run head cleaning utility.
3. Print quality not good after running cleaning utility.	Clogged or air trapped at print head.	Soak print head (only print head portion) in hot water for few second and clean with tissue.
4. Print quality not good after running cleaning utility and soaking in hot water.	Damaged or air trapped at print head.	Leave cartridge in the printer for 12 hours and perform a nozzle check subsequently.
5. Print quality not good after running cleaning utility, soaking in hot water and left unused for 12 hours.	Damaged print head.	No possible repair. Change a new cartridge.
6. Color different or incorrect.	Filling wrong ink in the wrong column, overfilling or cartridge not in upright position when filling was done.	Run nozzle check to determine color mix. Clear mix color by printing following color until ink is exhausted from cartridge. Conduct a refill for color exhausted.
7. Cartridge not identified by printer.	Poor contact at copper connectors.	Wipe copper connectors (with alcohol solutions) or use an eraser to rub on copper connectors.

For support and more details to solving your technical issues, please visit www.saintink.com for more information.

Information provided here are subject to change without notice. Saintink is not responsible for any damages direct or indirect arising from or related to the used of this information.

Saintink Incorporation (M) Sdn Bhd.
C41, Jln 2A, Kawasan Perindustrian Sg. Lalang,
08000 Sg.Petani, Kedah, Malaysia.

All brand names & trademarks are the properties of their respective holders and are referred to here for descriptive purposes only.

Compatible Cartridge for

Canon # CL-41/51/98/741/811/821/831

**Pixma iP1200/1300/1600/1700/1880/1980/
2200/2580/2680/2770/6210D/6220D/6320D,
E500/E600, M62170/M63170/M64170,
MP145/150/160/170/180/198/228/245/258/
450/460/476/486/496,
MX308/318/328/338/347/357/416.**

User's Guide

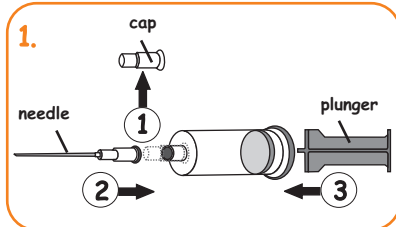
>> READ THIS BEFORE REFILLING

Technical details on your **CANON** Cartridge

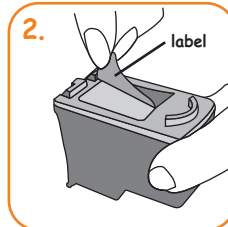
- The cartridge is embedded with a print head. The print head is a delicate component and should be handled with a proper care. Avoid touching the print head.
- Fine electronics at the print head allow the ink to be pumped out in small volume. These electronics are sensitive and are connected to the printer via a thin PC film at the side.
- To continue printing without ink will damage the print head as this electronic will get heated up. Once damaged, the cartridge cannot be used.



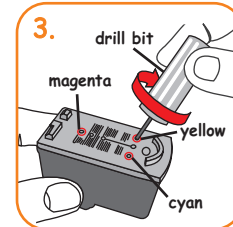
CANON >> CL - 41 / 51 / 98 / 741 / 811 / 821 / 831



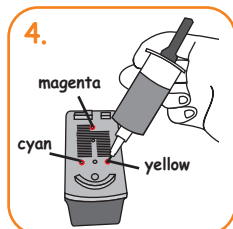
Remove the cap then attach the needle to the ink tube. Fix the plunger (per diagram) to allow ease of pressing.



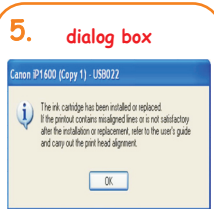
Remove the label on the cartridge.



Drill a hole on the cartridge lid for each color indicated as shown above by turning the drill bit clockwise. Ensure correct position of the drill hole.



Push the needle straight into the cartridge and pull out a little (2mm). Slowly press the plunger to inject about 3ml (per color) of ink into the cartridge. Ensure cartridge is in upright position. Stop refilling if ink start to drip at print head.




Install the cartridge back into the printer. Do a nozzle check. Click OK when this dialog box is shown. If the result of the nozzle check is not good, execute deep cleaning and check print out. Repeat deep cleaning if necessary.

6. Reattach cap to needle, keep ink out of children reach and store ink in a cool and dry place.

Caution

A dialog box might appear after the second refill. Just follow the screen instruction to continue printing. The refilled cartridge will not affect the printer as long as there are still ink in the cartridge.

Rev-07/072012



CARTRIDGE HOLDER AVAILABLE.

To be bought separately.

Note : In improving the print quality, this holder is used for **cleaning the cartridge nozzle.**